



INDOFINE Chemical Company, Inc.

121 Stryker Lane, Bldg. 30, Suite 1 • Hillsborough, NJ 08844 • U.S.A.

Phone: (908) 359-6778 • FAX: (908) 359-1179

website: www.indofinechemical.com

e-mail: chemical@indofinechemical.com

CERTIFICATE OF ANALYSIS

Catalog Number: 06-762

Product Name: **JATRRORRHIZINE CHLORIDE**
(Neprotine chloride)

CAS Number: [6681-15-8]

Chemical Formula: $C_{20}H_{20}ClNO_4$

Molecular Weight: 373.83

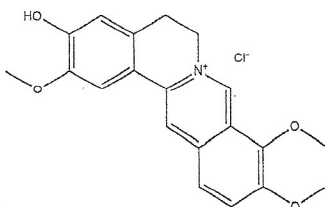
Lot Number: 2404934

Appearance: Orange powder

Water Content: 0.4%

Storage: Store in a cool, dry place

Purity(HPLC): 99.9%



Prepared by:
Ramesh Mandadi
Ramesh Mandadi
Director of Operations

Reviewed and Approved by:
Sujata Moton
Sujata Moton
VP



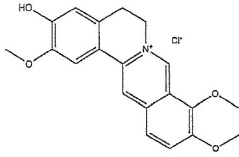
INDOFINE Chemical Company, Inc.

121 Stryker Lane, Bldg. 30, Suite 1 • Hillsborough, NJ 08844 • U.S.A.

Phone: (908) 359-6778 • FAX: (908) 359-1179

website: www.indofinechemical.com

e-mail: chemical@indofinechemical.com



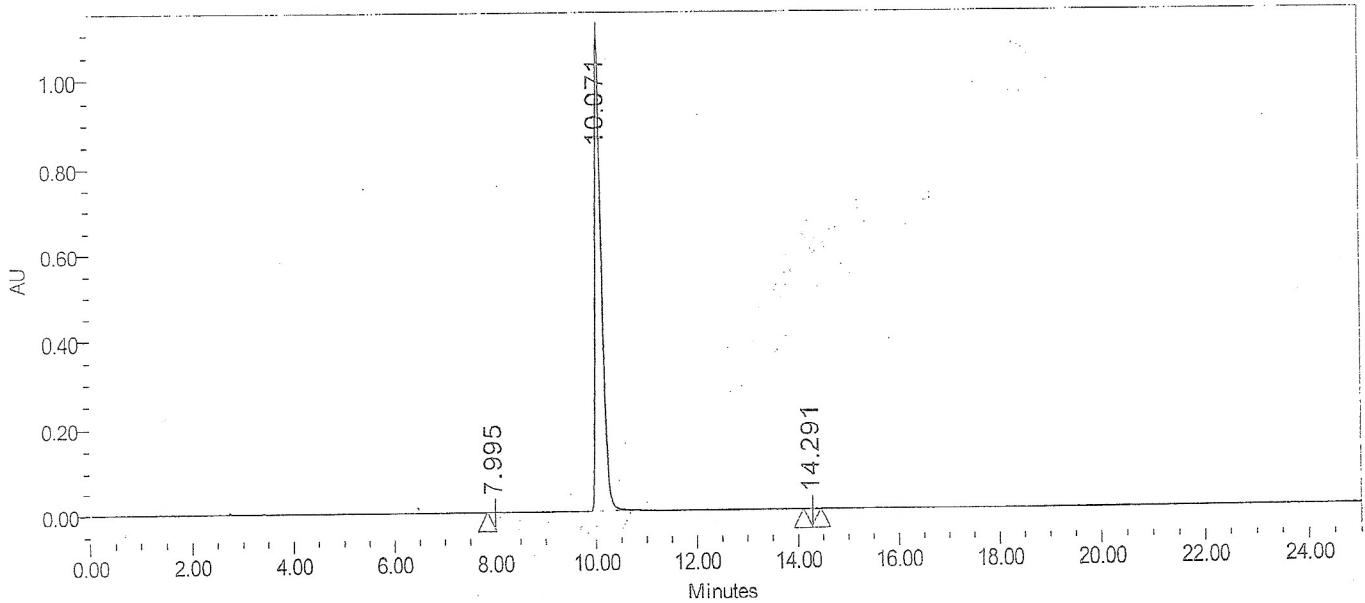
HPLC ANALYSIS

Catalog No.: 06-762
Product Name: Jatrorrhizine chloride
Lot No.: 2404934

SAMPLE INFORMATION

| | | | |
|-------------------|------------------------|---------------------|------------------------|
| Sample Name: | Jatrorrhizine chloride | Acquired By: | |
| Sample Type: | Unknown | Sample Set Name | |
| Vial: | 41 | Acq. Method Set: | Jatrorrhizine chloride |
| Injection #: | 1 | Processing Method | sample |
| Injection Volume: | 5.00 ul | Channel Name: | PDA Ch1 346nm@4.8nm |
| Run Time: | 25.0 Minutes | Proc. Chnl. Descr.: | PDA Ch1 346nm@4.8nm |

Auto-Scaled Chromatogram



Peak Results

| | Name | RT | Area | % Area | Height (μV) | USP Plate Count | USP Resolution |
|---|------|--------|---------|--------|-------------|-----------------|----------------|
| 1 | | 7.995 | 5169 | 0.05 | 751 | 32702.78 | |
| 2 | | 10.071 | 9780188 | 99.90 | 1091301 | 29208.33 | 9.82 |
| 3 | | 14.291 | 4709 | 0.05 | 459 | 38056.71 | 15.92 |

Prepared by:
Ramesh Mandadi
Ramesh Mandadi
Director of Operations

Reviewed and Approved by:
Sujata Moton
Sujata Moton
VP